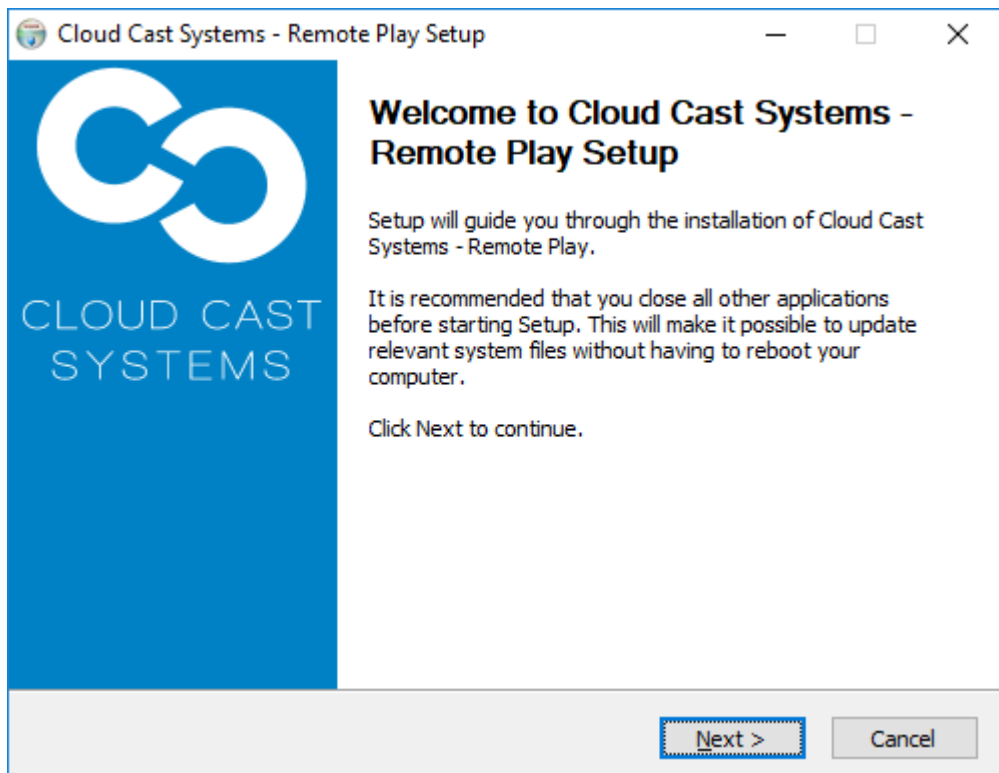


CLOUD CAST SYSTEMS
Remote Play

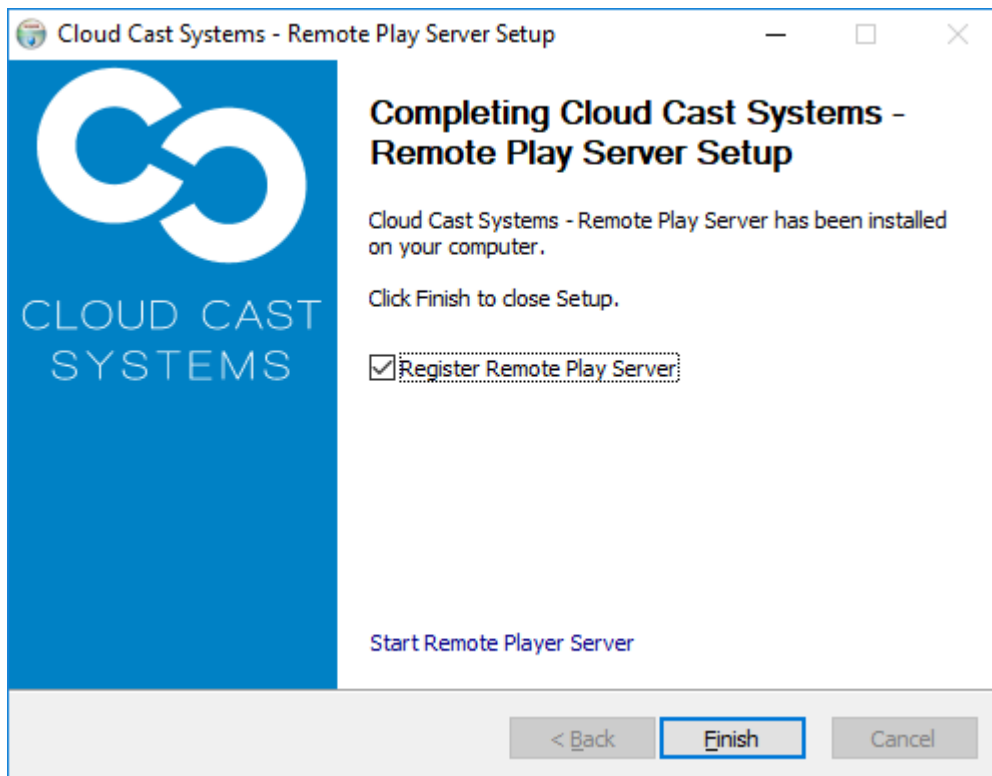


Getting Started with Remote Play.

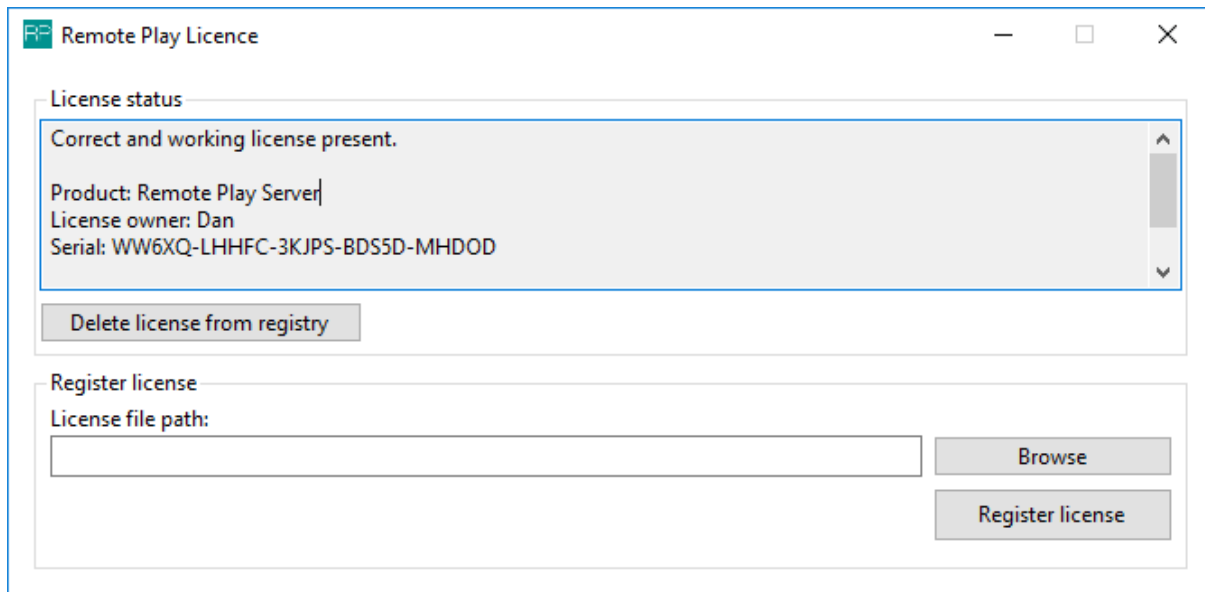
1. Run Installer



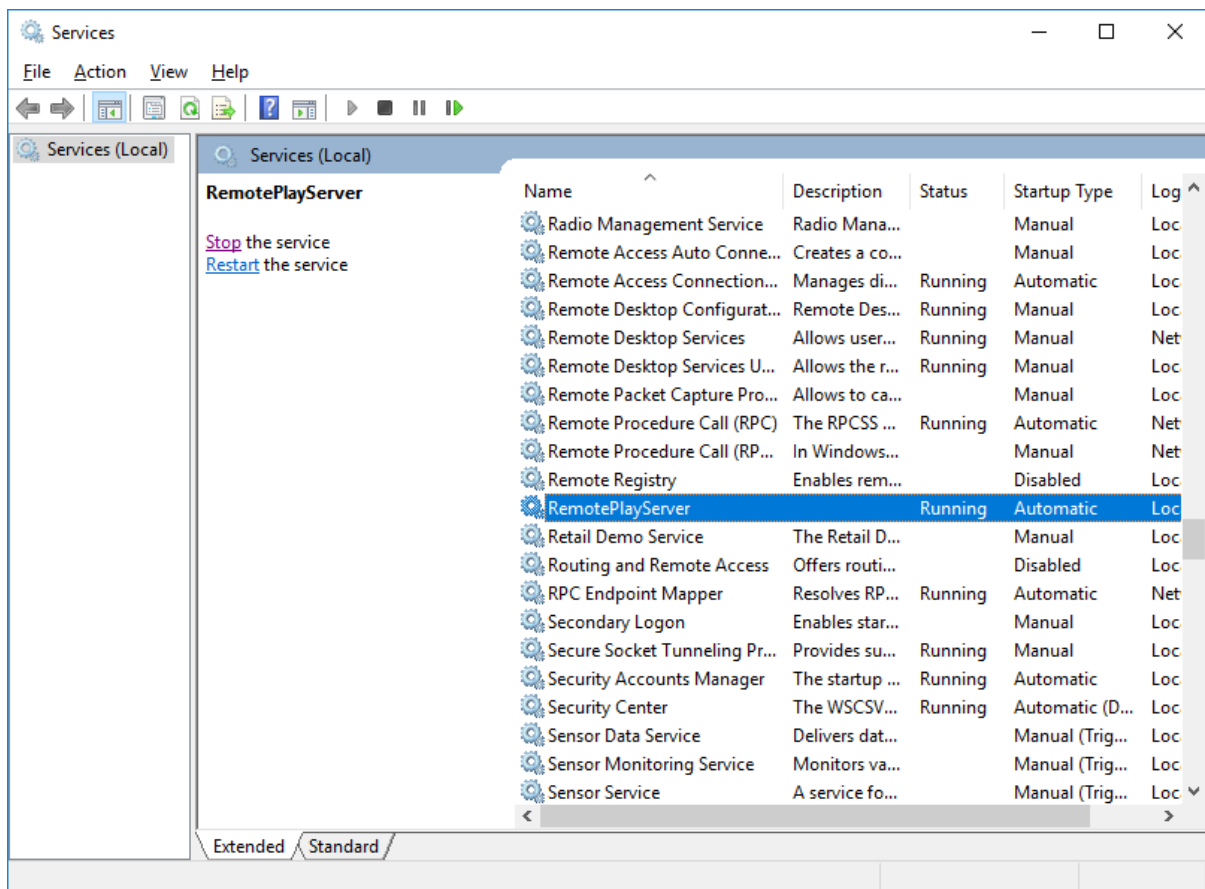
2. Register Remote Player Server



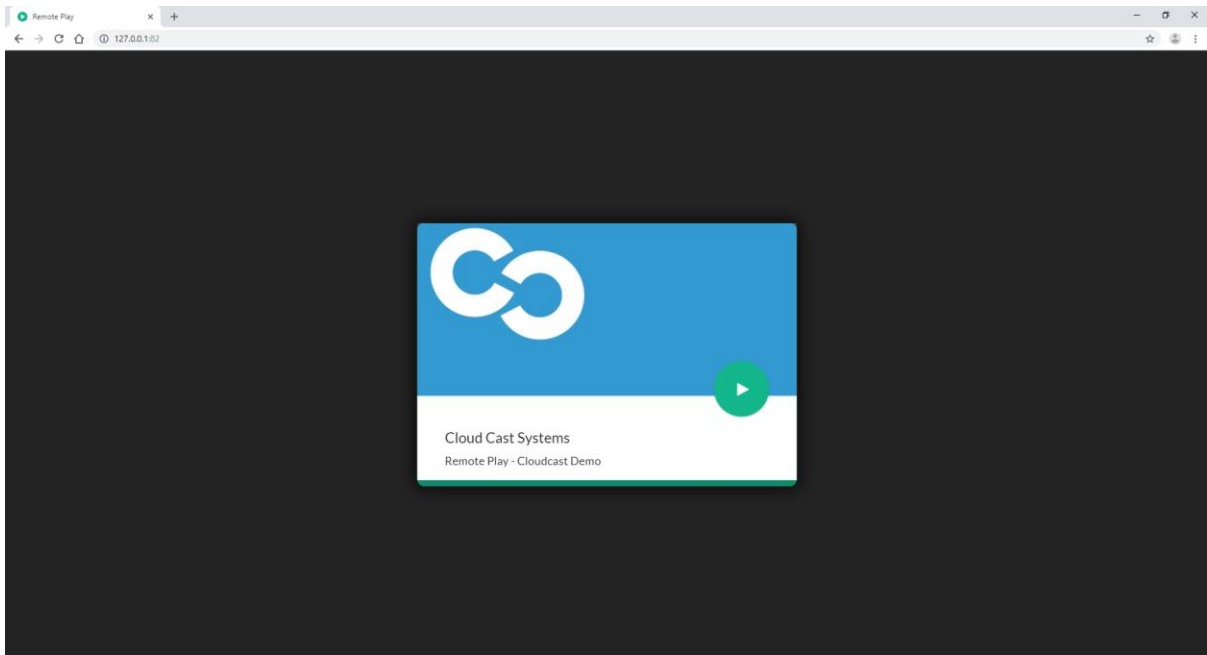
- Browse to Supplied Licence file and Select Register. If successful Licence status should appear with "Correct and working licence present"




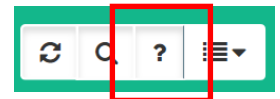
- Next Restart Service



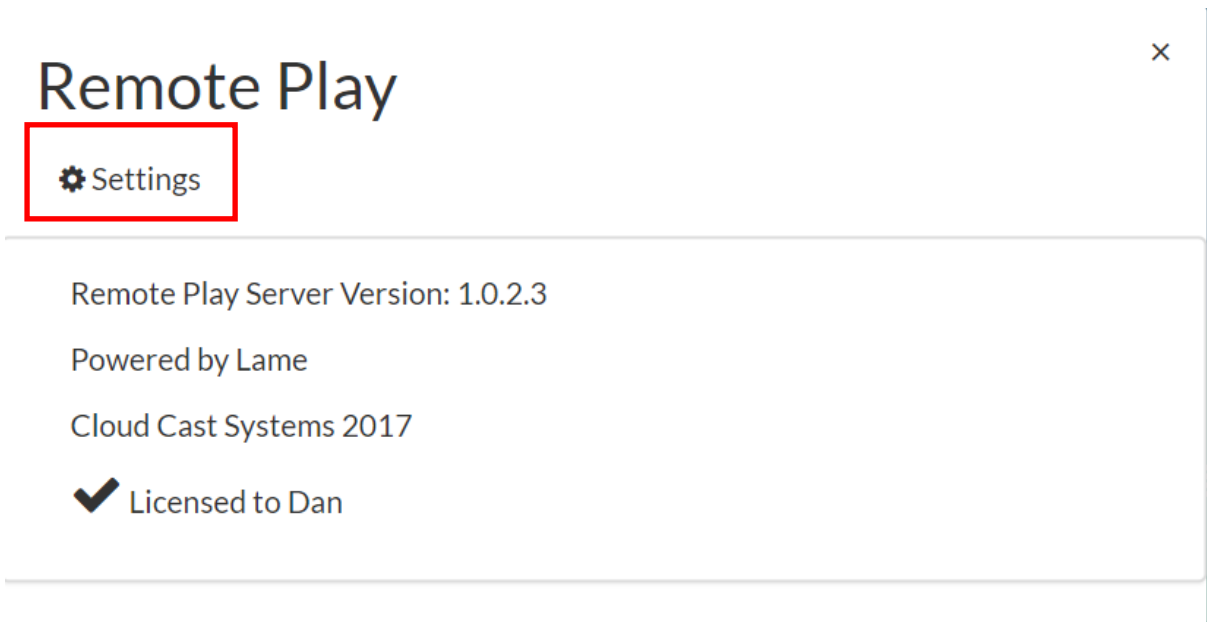
5. Navigate to 127.0.0.1:82 in Google Chrome and select the Green Play Button



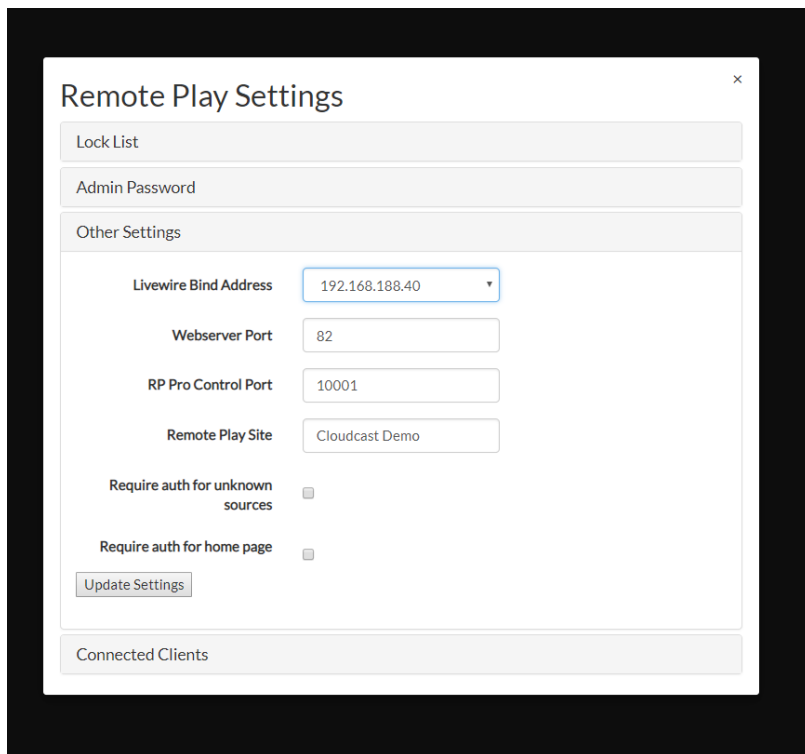
6. Select Settings Icon  and then select the question mark icon.



7. Confirm Remote Play Server is Licenced and Select Settings, Accessing settings requires authentication. **Default username is admin and default password is password.**



8. Select Other Settings and Select Correct Livewire Network Interface. Once complete press update settings, This will cause service to reset.



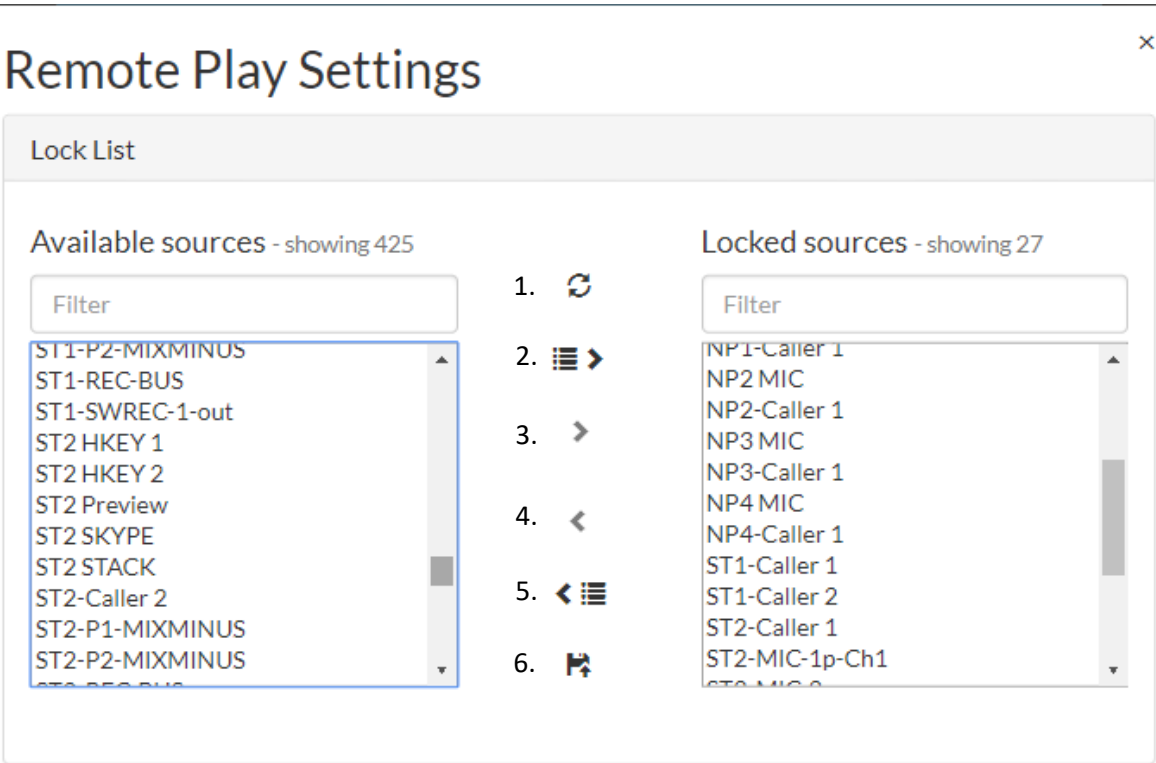
Other Settings include:

Livewire Bind Address:	Network Interface for Livewire (Default 127.0.0.1)
Webserver Port:	Webserver port for web interface (Default 82)
RP Pro Control Port:	TCP Port for RP Pro (Default 10001)
Remote Play Site:	Name of Site for identification purposes
Require AUTH for unknown sources:	Used for undiscovered sources that may be private, this will enable used to log into before source is streamed
Require AUTH for Homepage:	Used to restrict users from even entering home page.

Lock List

Lock list enables authentication requirements for sources, for example a microphone in a studio may not be ON, however the audio source can still be heard via livewire. This requires the source to be locked so only authentication users are able to listen.

To enable locked sources simply navigate to the settings page -> Lock List and move any sources from the left panel into the right. Once complete press the save icon (floppy disk)



Remote Play Settings

Lock List

Available sources - showing 425

Filter

- ST1-P2-MIXMINUS
- ST1-REC-BUS
- ST1-SWREC-1-out
- ST2 HKEY 1
- ST2 HKEY 2
- ST2 Preview
- ST2 SKYPE
- ST2 STACK
- ST2-Caller 2
- ST2-P1-MIXMINUS
- ST2-P2-MIXMINUS

1. Refresh

2. Multi Selection

3. Single Selection

4. Reverse Single Selection

5. Reverse Multi Selection

6. Save

Locked sources - showing 27

Filter

- NP1-Caller 1
- NP2 MIC
- NP2-Caller 1
- NP3 MIC
- NP3-Caller 1
- NP4 MIC
- NP4-Caller 1
- ST1-Caller 1
- ST1-Caller 2
- ST2-Caller 1
- ST2-MIC-1p-Ch1

1. Refresh Source List
2. Move Multi Selection from Available to Locked
3. Move Single Source from Available to Locked
4. Move Single Source from Locked to Available
5. Move Multi Selection from Lock to Available
6. Save Locked List